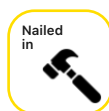
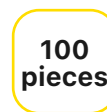
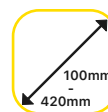
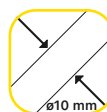


Fastener FIX-M



Nailed in plastic anchors with a metal-plastic specific nail for fixing of external thermal insulation composite systems with rendering



Product description

FIX insulation fasteners are versatile, featuring a dual anchoring zone: 30 mm and 70 mm. For standard applications, 30 mm anchoring shortens drilling time and allows for a shorter fastener. In more demanding conditions, when substrate quality is uncertain, anchoring to 70 mm increases the fastener's strength and load capacity.

Features and Benefits

- ▶ Quality confirmed by the European CE certificate.
- ▶ Additional ribbing prevents the pin from backing out during installation and slipping from the sleeve under wide temperature fluctuations over years of use.
- ▶ Faster installation thanks to the short anchoring zone.
- ▶ The new design of the anchoring zone with a diameter of 10mm influenced to increase the strength parameters (up to 1,5 kN).
- ▶ Very high plate stiffness: 1,0kN/mm.

Applications

- ▶ Facade insulation system (ETICS)
- ▶ Styrofoam plates
- ▶ Mineral wool plates
- ▶ Polyurethane plates
- ▶ Cork
- ▶ Wood wool plates

Material

- ▶ Sleeve – polypropylene
- ▶ Pin – galvanized steel with a plastic insulator

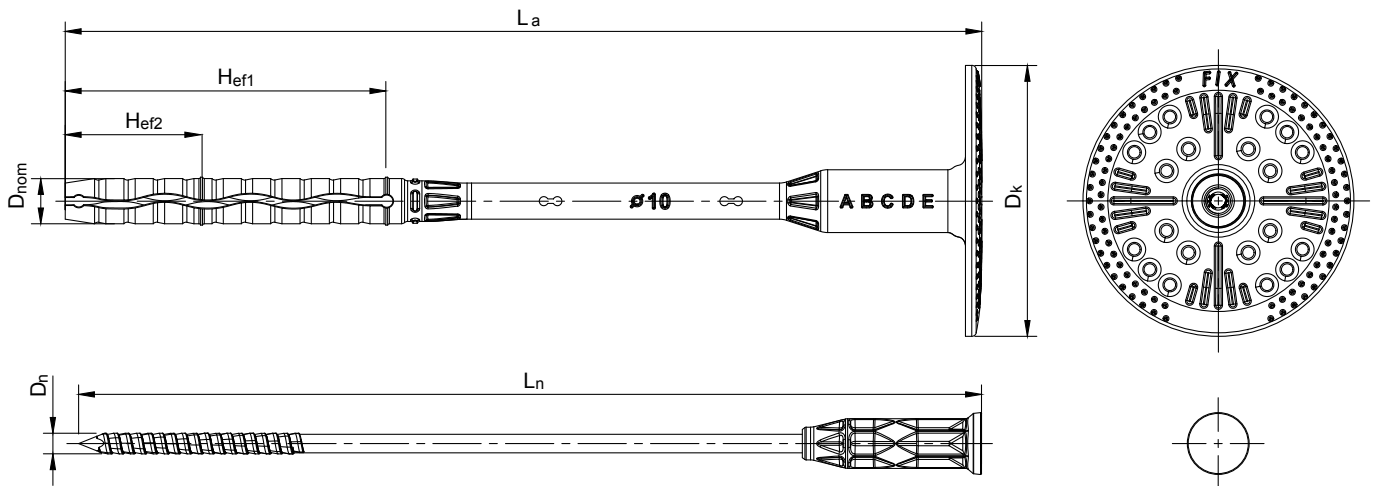
Approval

- ▶ European Technical Assessment ETA-24/1085

Substrate categories

- ▶ **A** - Concrete C12/15, Normal concrete of class C20/25 – C50/60
- ▶ **B** - Solid clay brick MZ, Solid silicate brick KS
- ▶ **C** - Perforated silicate brick KSL, Hollow brick Hlz, Porothersm 25
- ▶ **D** - Lightweight aggregate concrete LAC
- ▶ **E** - AAC2-AAC7 Autoclaved aerated concrete

Product information



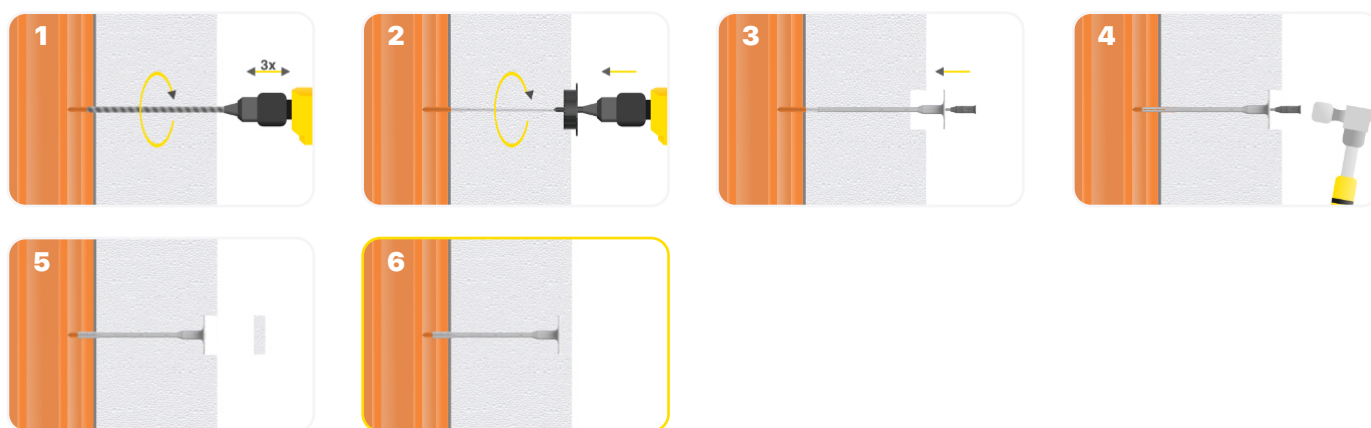
Type	Diameter D_{nom} [mm]	Length L_a [mm]	Plate diameter D_k [mm]	Effective anchoring depth H_{ef1} [mm]	Effective anchoring depth H_{ef2} [mm]	Recommended thickness of ETICS for long anchoring zone (countersunk assembly) [mm]	Recommended thickness of ETICS for short anchoring zone (countersunk assembly) [mm]
FIX-M 10x100	10	100	60	70	30	20 (40)	60 (80)
FIX-M 10x120	10	120	60	70	30	40 (60)	80 (100)
FIX-M 10x140	10	140	60	70	30	60 (80)	100 (120)
FIX-M 10x160	10	160	60	70	30	80 (100)	120 (140)
FIX-M 10x180	10	180	60	70	30	100 (120)	140 (160)
FIX-M 10x200	10	200	60	70	30	120 (140)	160 (180)
FIX-M 10x220	10	220	60	70	30	140 (160)	180 (200)
FIX-M 10x240	10	240	60	70	30	160 (180)	200 (220)
FIX-M 10x260	10	260	60	70	30	180 (200)	220 (240)
FIX-M 10x280	10	280	60	70	30	200 (220)	240 (260)
FIX-M 10x300	10	300	60	70	30	220 (240)	260 (280)
FIX-M 10x340	10	340	60	70	30	260 (280)	300 (320)
FIX-M 10x380	10	380	60	70	30	300 (320)	340 (360)
FIX-M 10x420	10	420	60	70	30	340 (360)	380 (400)

Characteristic resistance

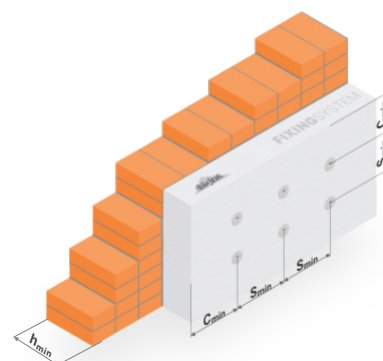
Substrate	Concrete C12/15	Concrete C16/20 ÷ C50/60	Thin concrete members C16/20 ÷ C50/60	Clay brick MZ	Calcium silicate brick KS	Calcium silicate hollow block KSL, a=40mm	Vertically perforated clay bricks Porotherm 25, a=12mm	Vertically perforated clay bricks Porotherm 25, a=17mm	Lightweight concrete hollow block HBL, a=33mm	Lightweight concrete hollow block Tekno Amerblok PK178 a=30mm	Lightweight concrete hollow block Tekno Amerblok PK19 a=30mm	Lightweight concrete block LAC	Autoclaved aerated concrete block AAC2	Autoclaved aerated concrete block AAC7
	Substrate categories													
	A	A	A	B	B	C	C	C	C	C	C	D	E	E
Drilling method														
	hammer	hammer	hammer	hammer	hammer	hammer	rotary	rotary	rotary	rotary	rotary	rotary	rotary	rotary
Characteristic resistance [kN]														
H _{ef2} - 30mm	0,70	1,00	1,00	1,00	1,00	1,00	0,50	0,55	0,60	1,00	1,00	0,60	0,60	0,70
H _{ef1} - 70mm	1,30	1,50	1,50	1,50	1,50	1,50	0,60	0,80	0,90	1,50	1,50	0,90	0,90	1,20

Fastener type	FIX-M	
The strength of the plate	[kN]	2,60
The stiffness of the plate	[kN/mm]	1,0
Point thermal conductivity	[W/K]	0,002

Installation instructions



The minimum thickness of the substrate	$h_{min} \geq$ [mm]	100
Minimum spacing of fasteners	$S_{min} \geq$ [mm]	100
Minimum spacing of fasteners	$C_{min} \geq$ [mm]	100
Recommended number of pieces	pieces / m ²	6-8 / m ²
Recommended number of pieces at the corners of the building	pieces / m ²	8-10 / m ²



Logistics information

Type	Index	Quantity [pcs]		Weight [kg]		EAN code
		Unit package (carton)	Pallet (120x80x180 [cm])	Unit package (carton)	Pallet (120x80x180 [cm])	
FIX-M 10x100	M100	100	10000	2,3	250	5908275918004
FIX-M 10x120	M120	100	10000	2,8	300	5908275918011
FIX-M 10x140	M140	100	10000	3,2	340	5908275918028
FIX-M 10x160	M160	100	10000	3,6	380	5908275918035
FIX-M 10x180	M180	100	8000	3,9	332	5908275918042
FIX-M 10x200	M200	100	8000	4,3	364	5908275918059
FIX-M 10x220	M220	100	8000	4,6	388	5908275918066
FIX-M 10x240	M240	100	5600	5,0	295	5908275918073
FIX-M 10x260	M260	100	5600	5,4	325	5908275918080
FIX-M 10x280	M280	100	5600	5,7	340	5908275918097
FIX-M 10x300	M300	100	5600	6,0	355	5908275918103
FIX-M 10x340	M340	100	4200	6,5	293	5908275918110
FIX-M 10x380	M380	100	4200	7,1	318	5908275918127
FIX-M 10x420	M420	100	4200	7,7	343	5908275918134